

Entry / ECO

Standard / STD

Professional / PRO

ODM & OEM

Intelligent / INT



LED Batten Light
DB186A Series



Introduction

This is a high quality easy replaceable LED batten with high lumen efficiency. It adopts high lumen efficiency SMD light source, PC cover is internal stripe design which makes a uniform light output. For structure, it has mainly two module parts, light source module and bracket module could be replaced freely; single CCT and 3CCT module can be interchanged based on the same bracket module. For installation, it utilizes plastic flexibility to clips the light source module into bracket, the end cap mounting hole allows loop in/ loop out connection, which offers more possibility for wider applications.

Features

- Compact design with screwless surface, which fit the ceiling tightly
- Interchangeable CCT(3000K+4000K+5700K) with slide switch
- High lumen efficiency, 150lm/W@4000K
- Size options:600/1200/1500/1800mm
- End cap with mounting hole for loop in/ loop out connection
- Internal flicker free driver

Application Areas

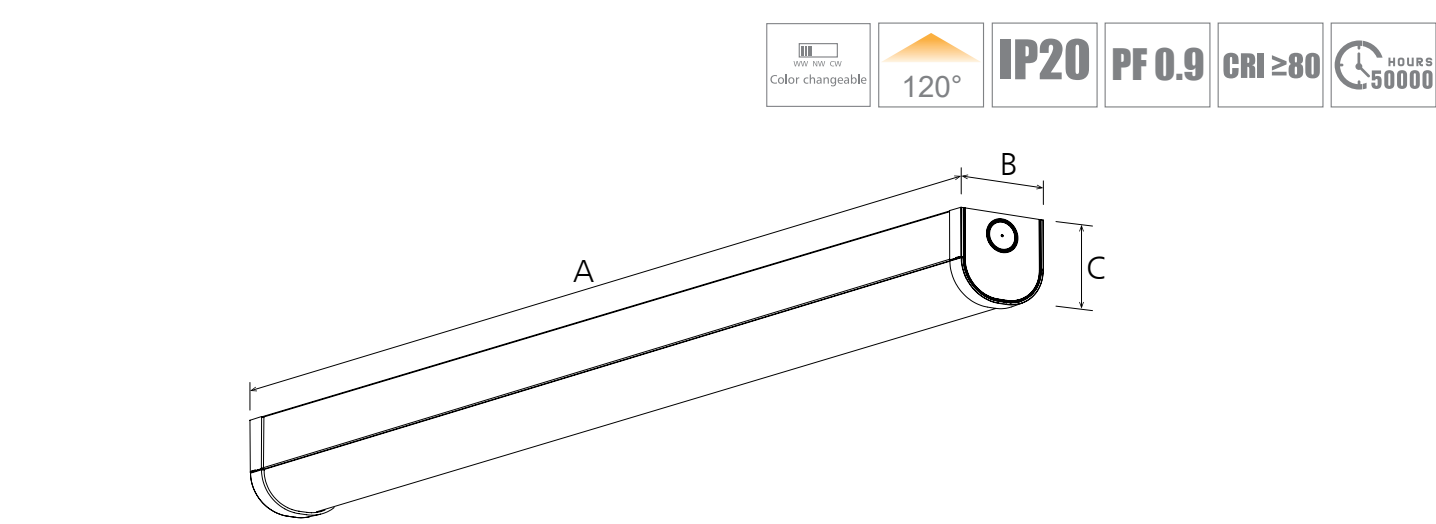
It is widely used in workshop, warehouse, parking lot, factories, shopping mall etc.





Technical Data Sheet

Code			DB186A-600-10W	DB186A-600-20W	DB186A-1200-20W	DB186A-1200-38W	DB186A-1500-30W	DB186A-1500-50W	DB186A-1800-30W	DB186A-1800-50W
Dimension(mm)			600*65*66		1200*65*66		1500*65*66		1800*65*66	
Cutout (mm)			-							
Watt(W)			10W	20W		38W	30W	50W	30W	50W
Rated Input Voltage			AC 220-240V							
Input Voltage			AC 198-264V							
LED Module Input			-							
Light Source			SMD							
SDCM			< 6							
CCT(K)			1-CCT: 3000K/4000K/5000K/5700K 3-CCT: 3000K + 4000K + 5700K							
CCT Selection DIP Switch			YES							
Luminous Flux (lm) ±5% CRI80	1-CCT	Non-DIM	1200-1400	2700-2900	2700-2900	5200-5700	4300-4650	7200-7700	4300-4650	7200-7700
		DIM	-							
	3-CCT	Non-DIM	1200-1400	2700-2900	2700-2900	5200-5700	4300-4650	7200-7700	4300-4650	7200-7700
		DIM	-							
CRI			80							
Beam Angle (°)			120°							
UGR			-							
LED Driver			Built-in							
Dimming Option			NO							
Sensor			-							
Emergency Kits			NO							
Electrical Class			Class I							
Ingress Protection(IP Rating)			IP20							
Impact Resistance(IK Rating)			IK06							
Product Finishing			White RAL 9016							
Optics Material			PC							
Housing Material			PC / SPCC							
Lifetime (hr)			50,000h							
Glow wire test (°C)			750°C							
Operating Temp.(°C)			-20°C~40°C							
Storage Temp.(°C)			-20°C~65°C							
Installation			Surface mount / Pendant							



Measurement

Code	Dimension(mm)			Size(mm)	Product Weight (Kg)		Package weight (Kg)		Carton Size(cm)	Qty/CTN	20GP (pcs)	40HQ (pcs)
	A	B	C		N.W/PC	G.W/PC	N.W/CTN	G.W/CTN				
DB186A-600	600	65	66	600*65*66	0.55	0.78	6.6	10.12	71.5*32*28	12	5376	12096
DB186A-1200	1200	65	66	1200*65*66	0.95	1.34	5.7	8.88	131.5*24.5*19.5	6	2508	5928
DB186A-1500	1500	65	66	1500*65*66	1.14	1.61	6.84	10.66	161.5*24.5*19.5	6	2046	4992
DB186A-1800	1800	65	66	1800*65*66	1.33	1.88	7.98	12.44	191.5*24.5*19.5	6	1782	4212

Driver Datasheet(Non-dimmable)

Total load wattage		10W	20W	38W	30W	50W
Output	Rated output current	45mA	95mA	90mA	70mA	110mA
	Output Voltage range	DC200-220V		DC390-430V		
	Line Regulation	±0.5mA				
	Setup, Rise Time	≤0.5S @230V				
	Flickering Index	0.5%(NO RISK)				
Input	Rated Input Voltage	AC 220-240V				
	Input Voltage	AC198-264V				
	Frequency	50/60Hz				
	Rated Input Current	0.05A	0.10A	0.19A	0.15A	0.25A
	Input Current	0.055A	0.11A	0.20A	0.16A	0.27A
	Power Factor	≥0.9				
	THD	-				
	Efficiency	≥90%				
	No load wattage	<0.5W @ 230Vac				
Protection	Short circuit protection	PASS				
	Over voltage protection	PASS				
	Over temperature protection	PASS				
Safety &EMC	Withstand voltage	I/P-FG:1.5KVac, <5mA 60S				
	Isolation Resistance	500VDC, ≥2M Ω				
	Surge	IEC/EN61000-4-5(P<25W; L-N:500V, L/ N-PE:1KV)		IEC/EN61000-4-5 (P≥25w L-N:1KV, L/N-PE:2KV)		
	EMC Emission	EN55015, EN61000-3-2				
	EMC Immunity	EN61000-4-2,3,4,5,6,8,11; EN61547				

■ Installation Procedure

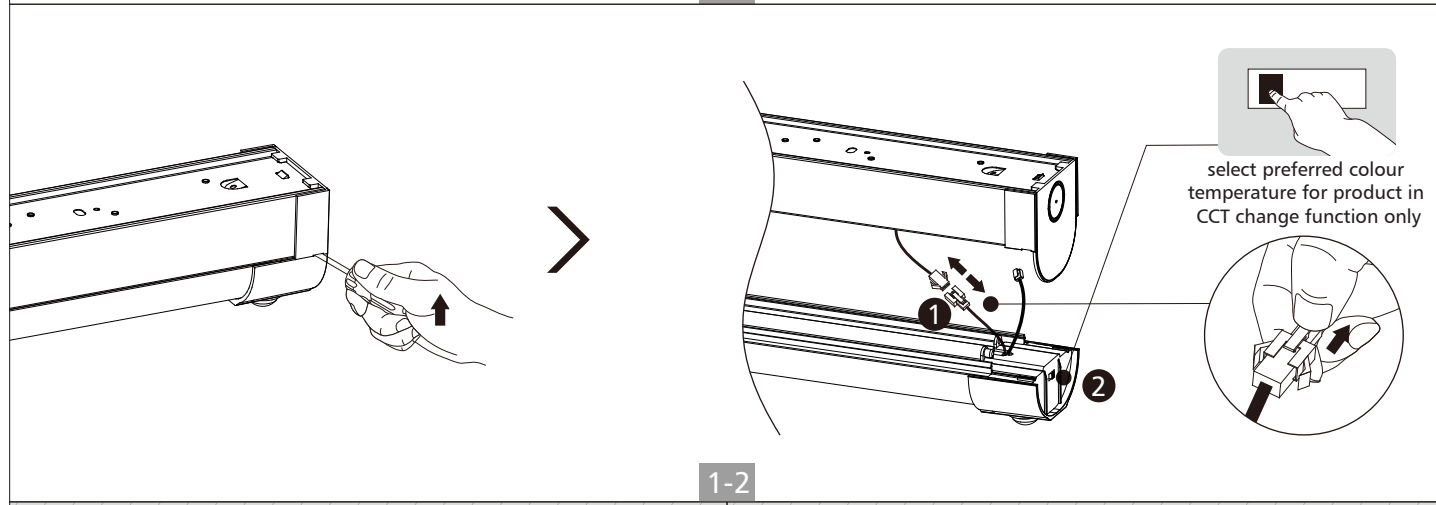
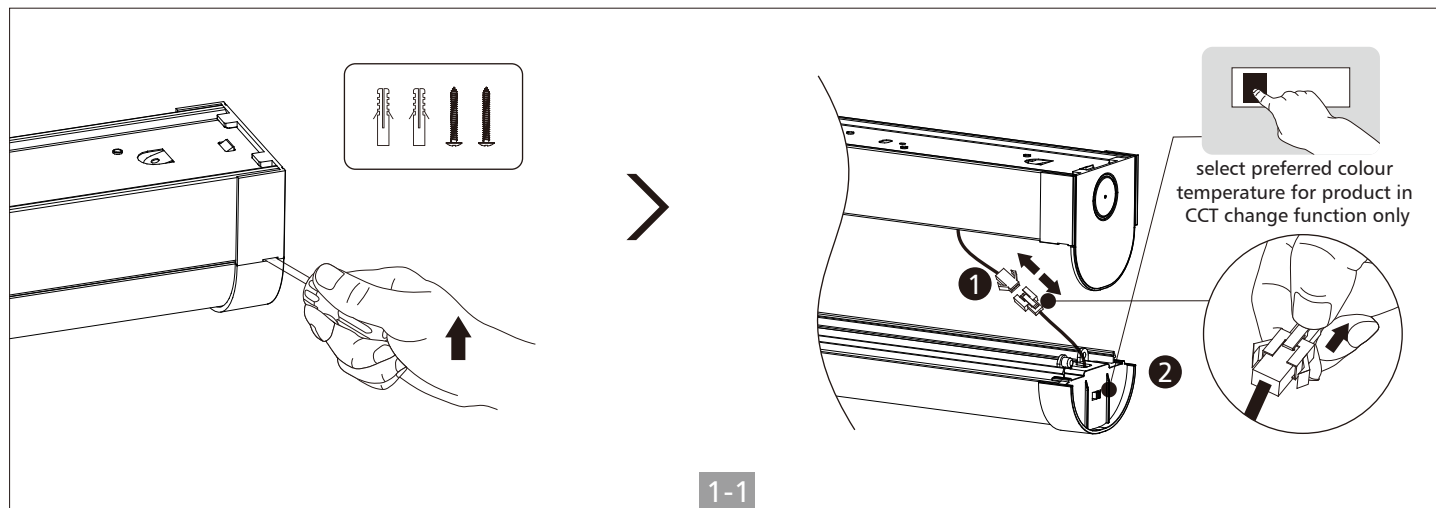
WARNING ⚡

1. Switch off before installation.
2. Switch on only after complete installation and examination of the circuit.
3. Professional electrician for installation and maintenance only.

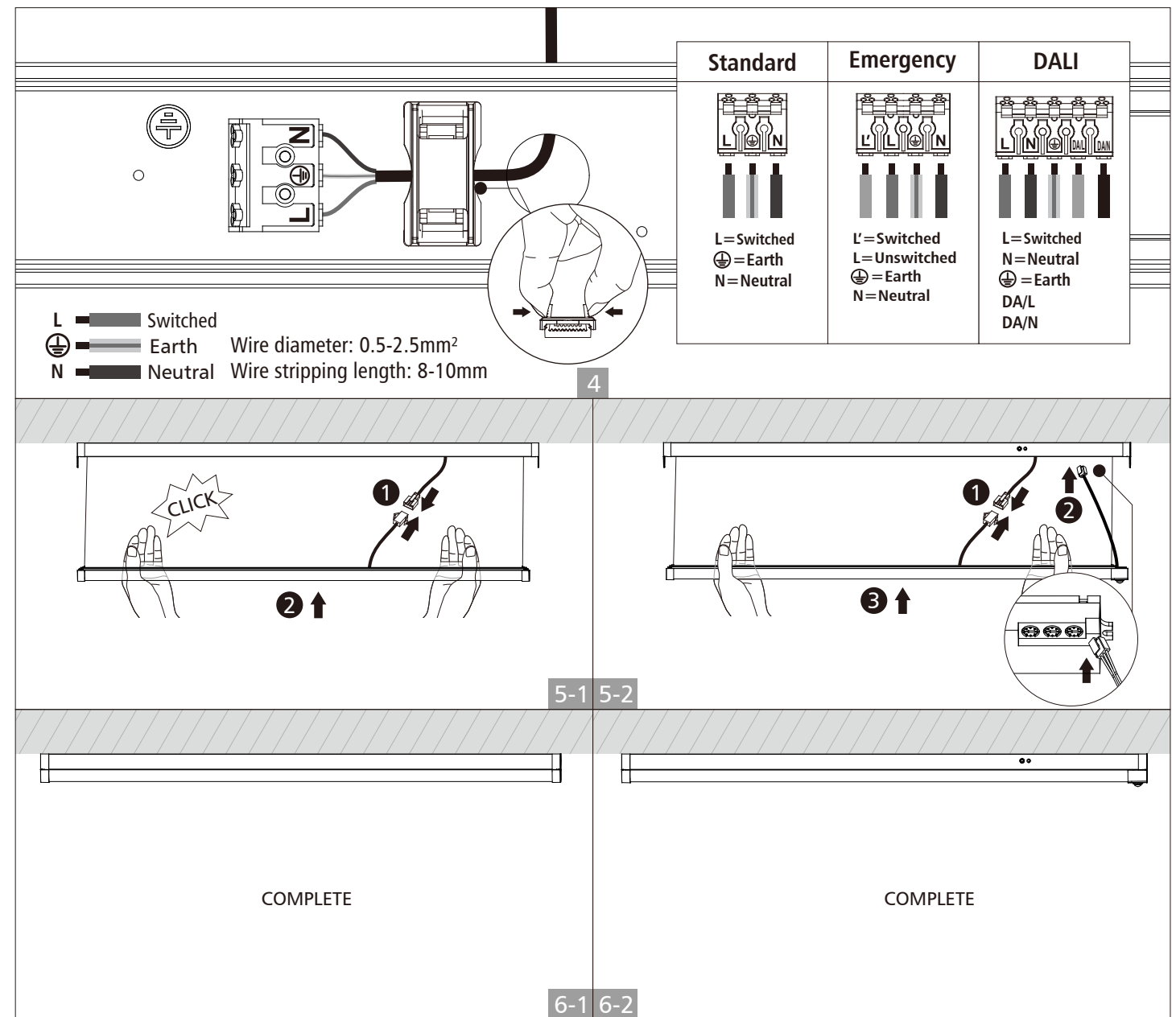
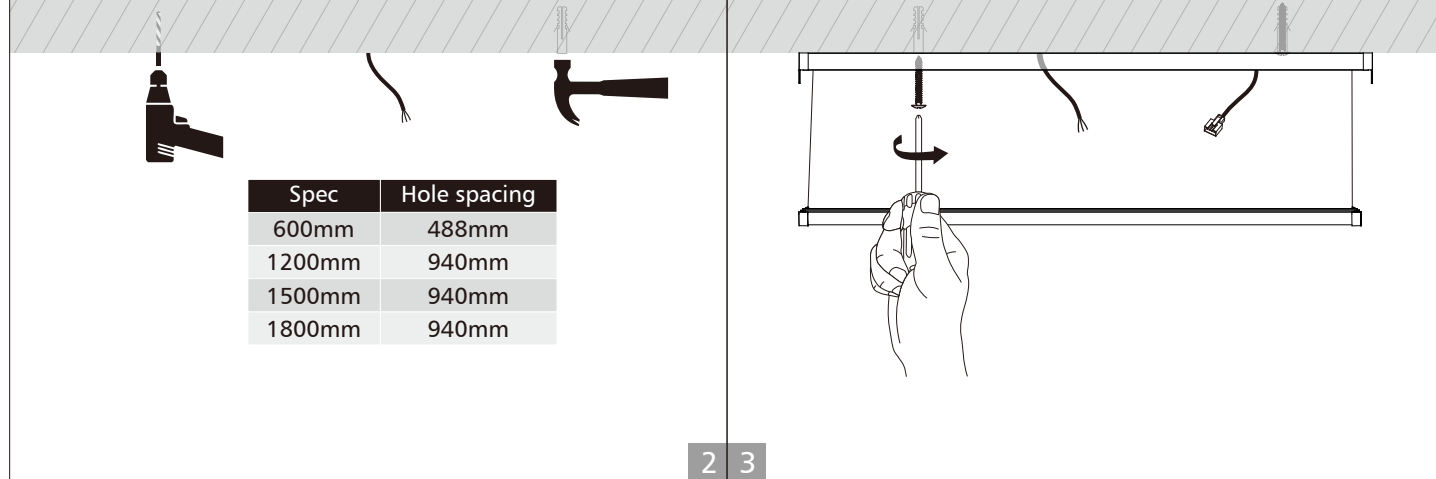


Turn Off power supply before starting any installation. Read instructions & check you have all the tools & accessories to complete the installation correctly.

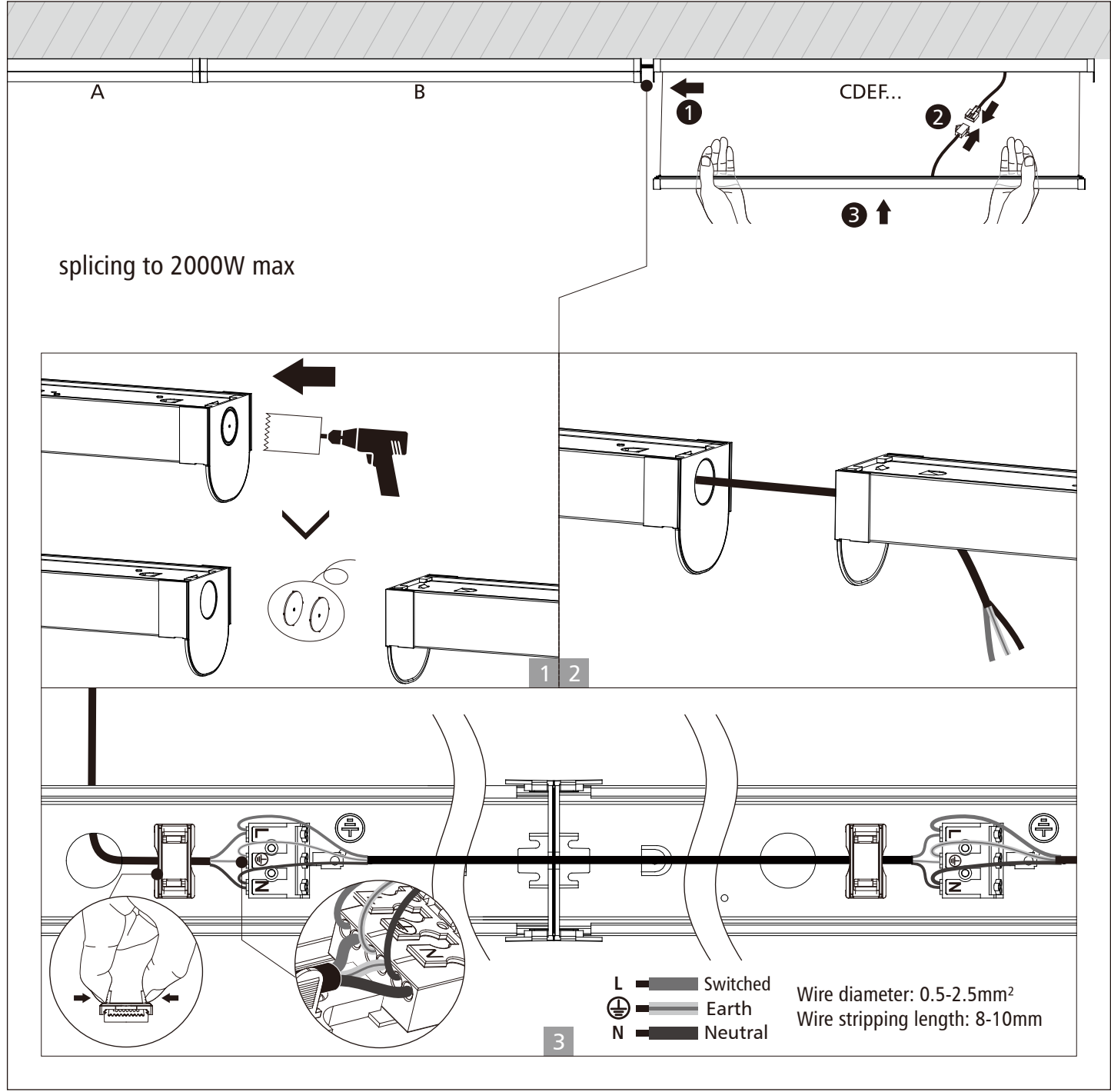
■ Surface mount installation



Spec	Hole spacing
600mm	488mm
1200mm	940mm
1500mm	940mm
1800mm	940mm

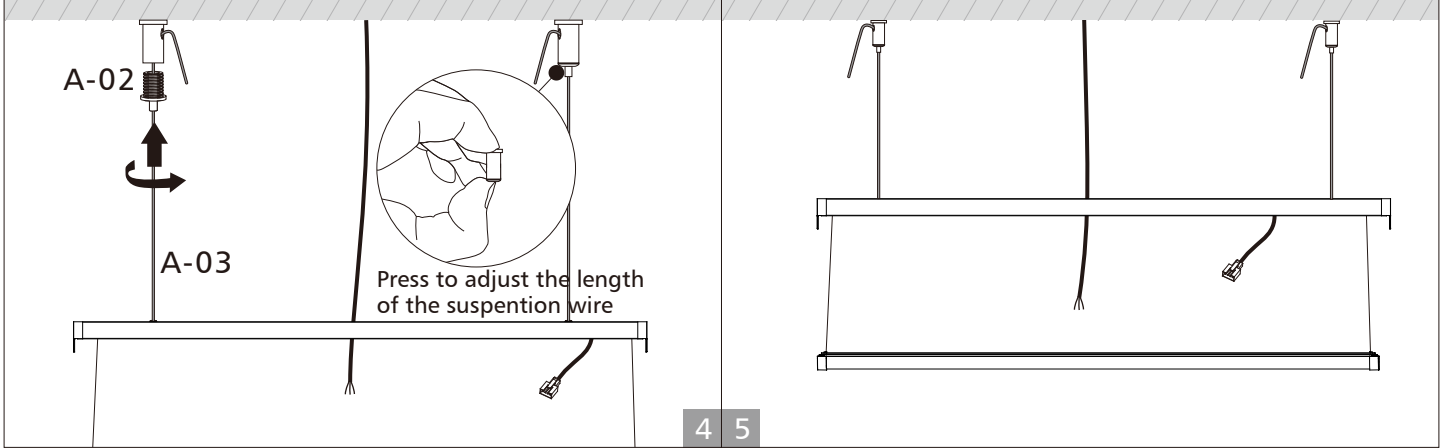
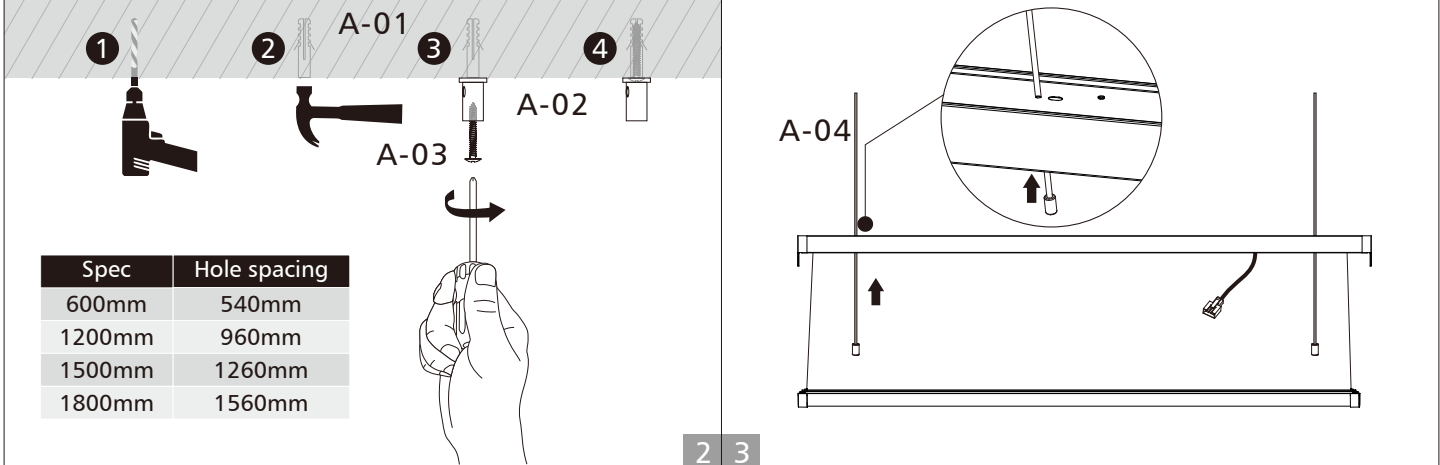
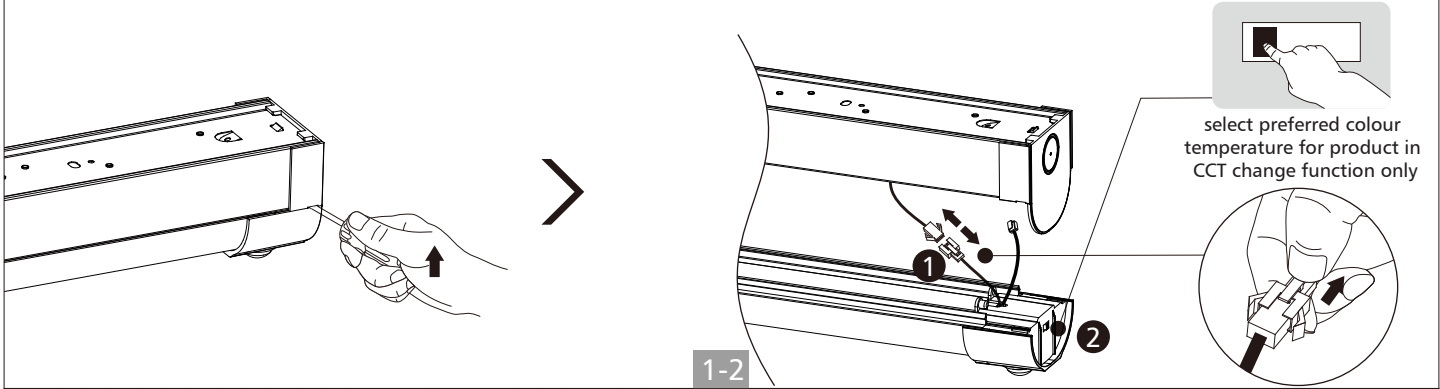
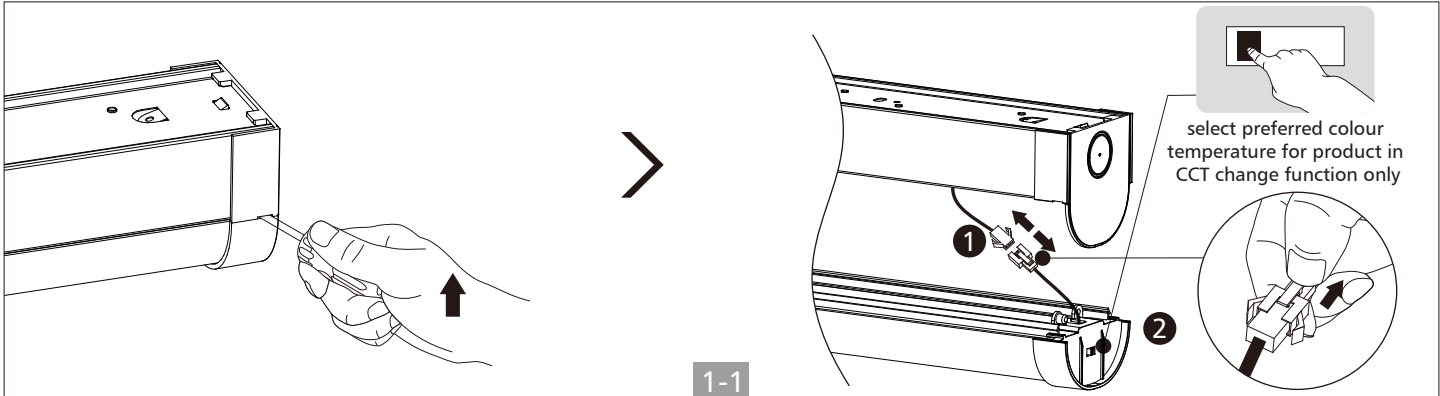


■ Splicing for surface mount installation



■ Pendant installation

Code	A-01	A-02	A-03	A-04
ACC	x2	x2	x2	x2





UPSHINE | *Up to Shine, there is life*
光之上，是生活

▼ www.upshine.com info@upshine.com TEL: +86 755 2919 7332 ▼

Add: 2nd building Dingfeng High-Tech Zone, Fuyuan 1st road, Fu Yong Sub-district, Bao'an, Shenzhen China